



# SPIERINGS SK1265 AT6



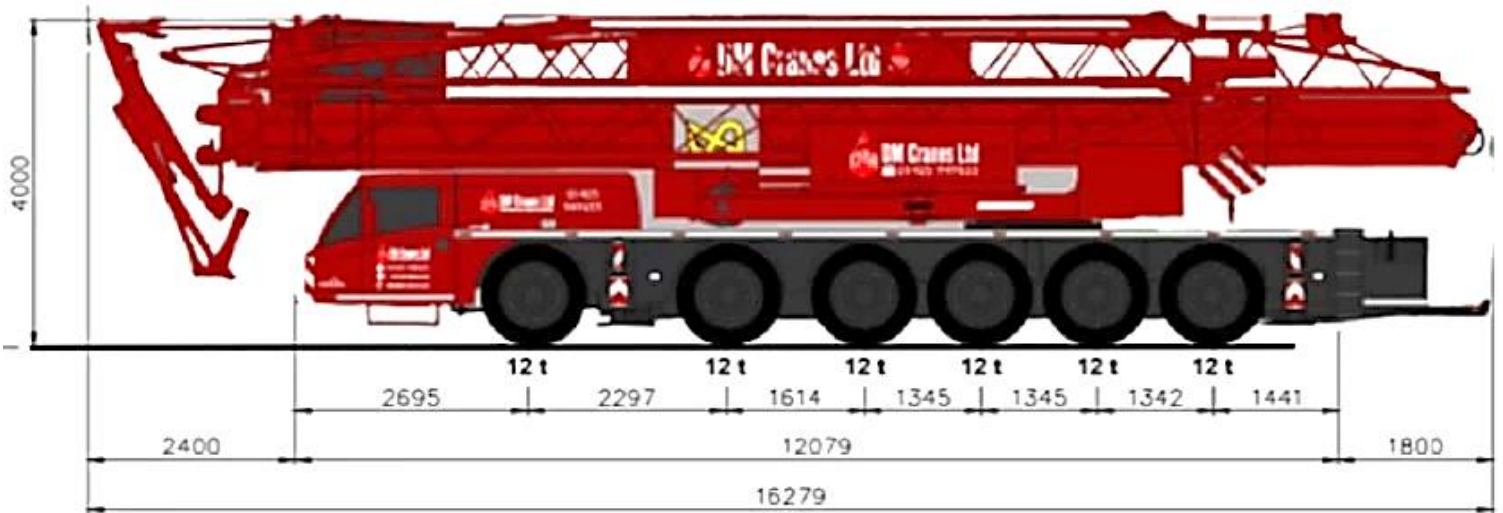
**DM Cranes Ltd**

**MOBILE TOWER CRANES**

[www.dmcranes.co.uk](http://www.dmcranes.co.uk)

## SPIERINGS HYDRAULIC FOLDING CRANE

*SPIERINGS HYDRAULIC FOLDING CRANE*



**SPIERINGS KANEN**

Merwedestraat 15  
5347 KZ Oss NL  
Tel. +31 (0)412-626964  
Fax +31 (0)412-645299

**Total weight: 72000 kg**

**Tel:** 03330 912002 | **Email:** office@dmcranes.co.uk

Northern depot | Southern depot

# SPIERINGS SK1265 AT6



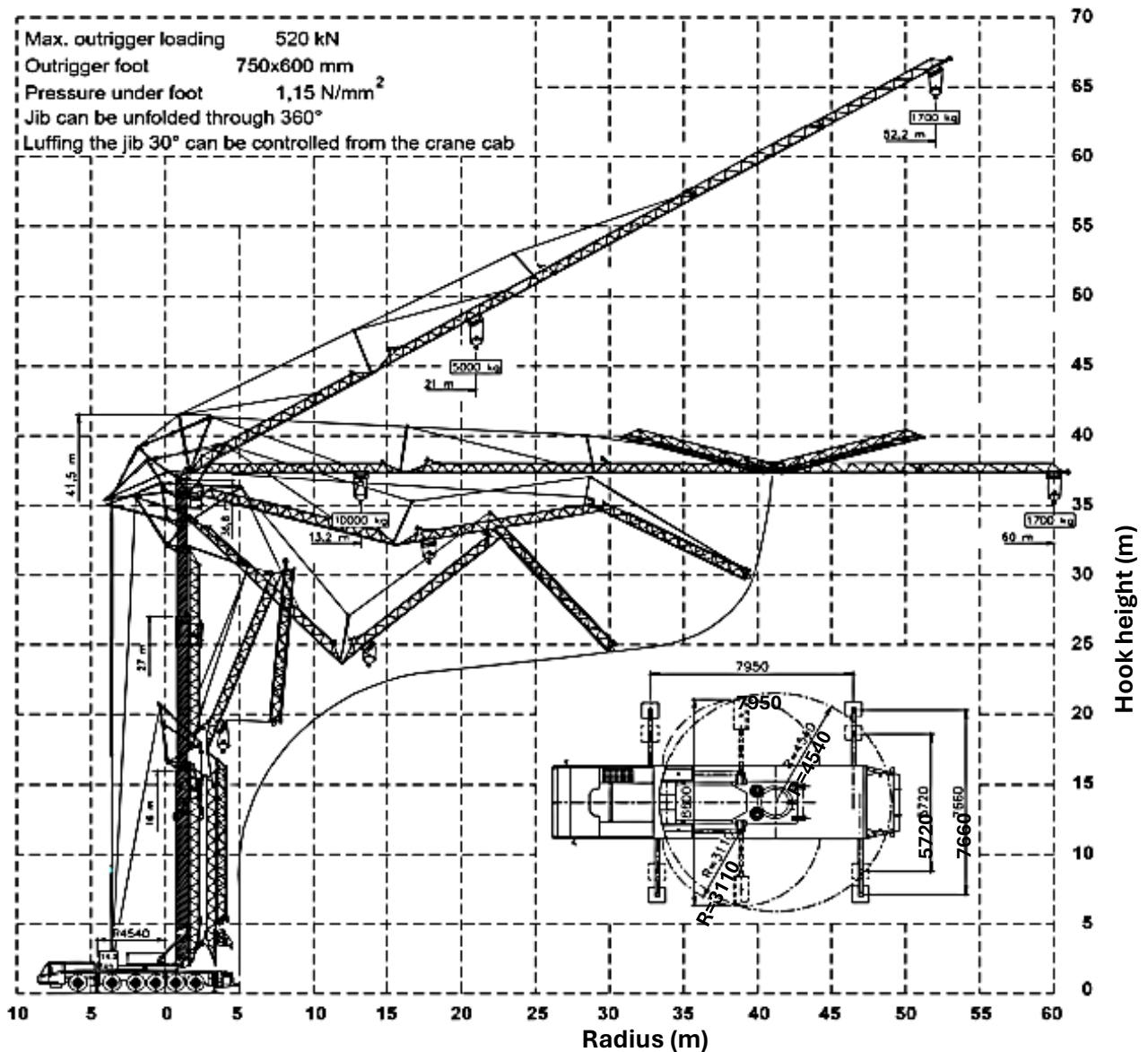
DM Cranes Ltd

MOBILE TOWER CRANES

[www.dmcranes.co.uk](http://www.dmcranes.co.uk)

## SPIERINGS HYDRAULIC FOLDING CRANE

*SPIERINGS HYDRAULIC FOLDING CRANE*



Changes subject to modifications

 **SPIERINGS  
KRANEN**

Merwedestraat 15  
5347 KZ Oss NL  
Tel. +31 (0)412-626964  
Fax +31 (0)412-645299

Tel: 03330 912002 | Email: [office@dmcranes.co.uk](mailto:office@dmcranes.co.uk)

Northern depot | Southern depot

# SPIERINGS SK1265 AT6



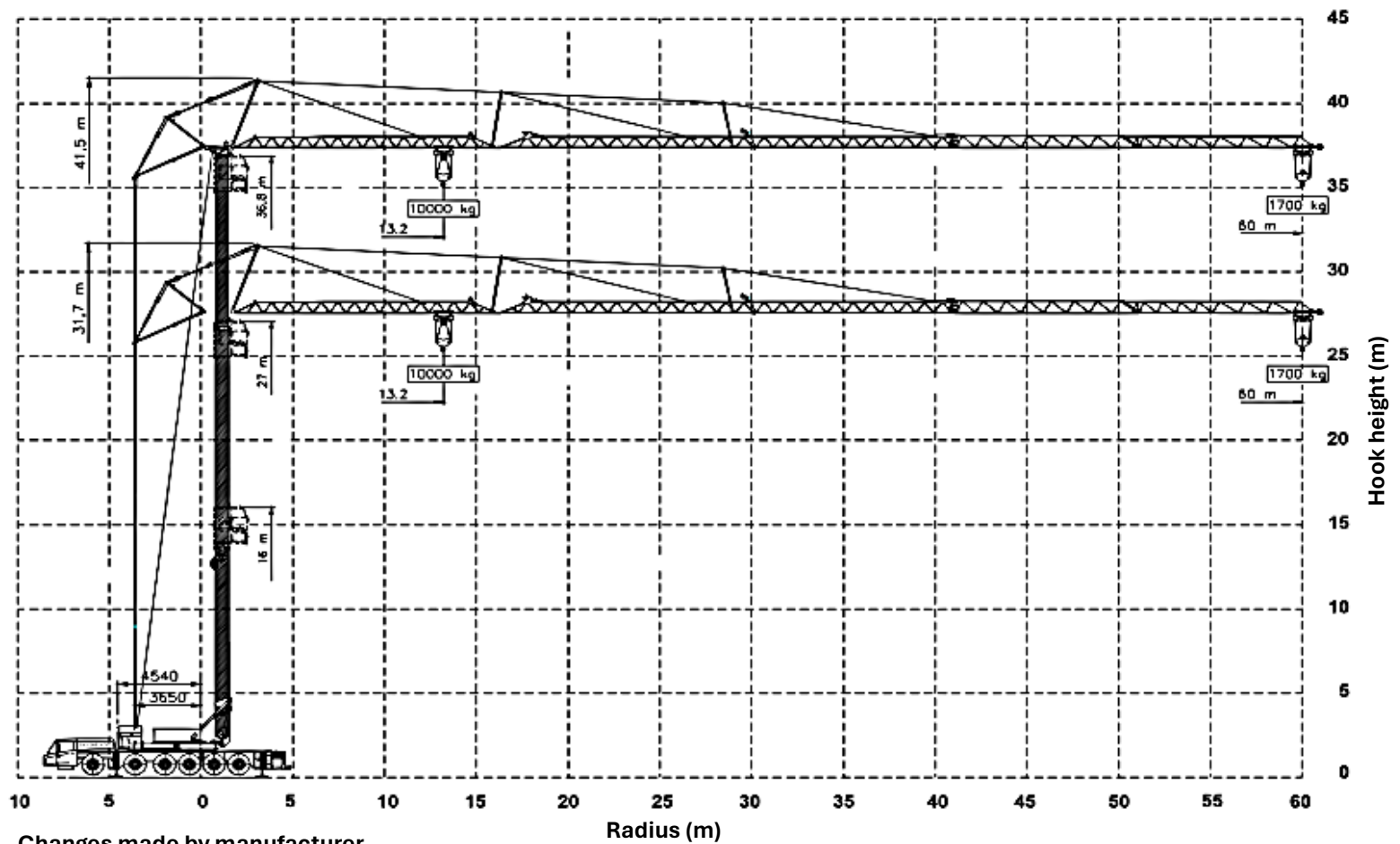
DM Cranes Ltd

MOBILE TOWER CRANES

[www.dmcranes.co.uk](http://www.dmcranes.co.uk)

## SPIERINGS HYDRAULIC FOLDING CRANE

*SPIERINGS HYDRAULIC FOLDING CRANE*



Changes made by manufacturer

Radius (m)

Hook height (m)



DM Cranes Ltd



Tel: 03330 912002 | Email: [office@dmcranes.co.uk](mailto:office@dmcranes.co.uk)

Northern depot | Southern depot

# SPIERINGS SK1265 AT6

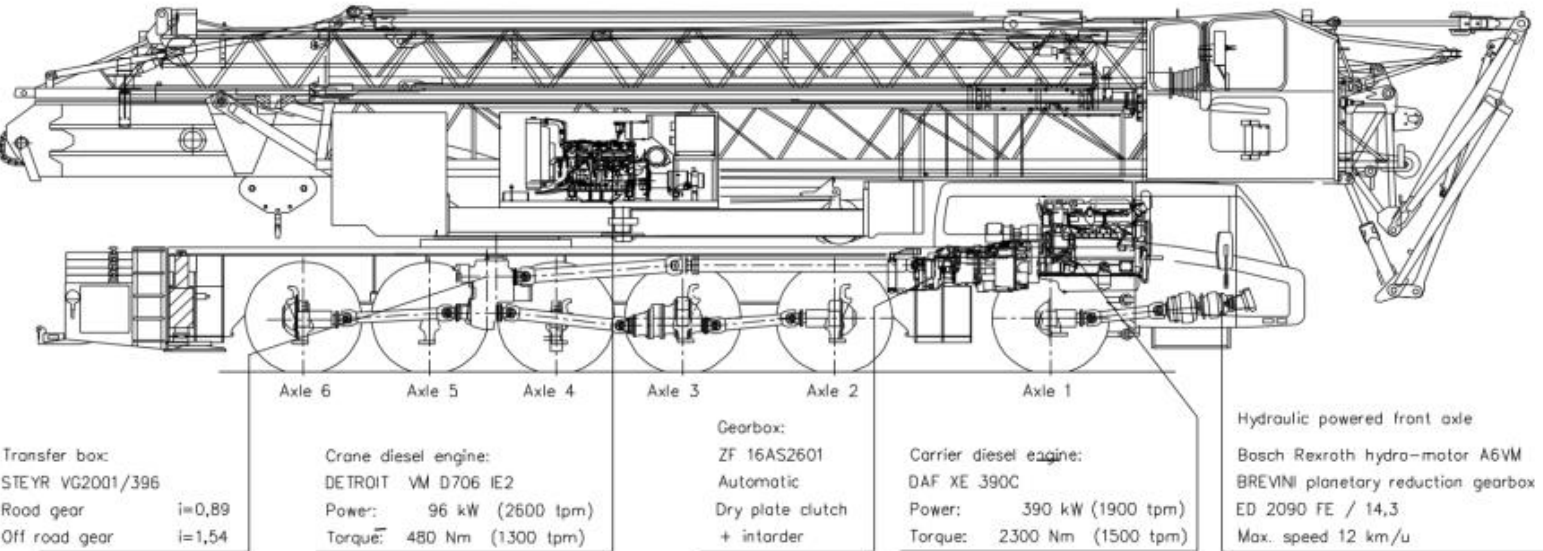


**DM Cranes Ltd**

## MOBILE TOWER CRANES

[www.dmcranes.co.uk](http://www.dmcranes.co.uk)

### DRIVE TRAIN SPIERINGS FOLDING CRANE



- Axle 1: Steer axle, hydraulic driven (end reduction  $i=6,38$ )
- Axle 2: Steer drive axle (end reduction  $i=6,35$ )
- Axle 3: Steer drive axle (end reduction  $i=6,35$ )
- Axle 4: Axle, non steered and non powered
- Axle 5: Steer axle
- Axle 6: Steer drive axle (end reduction  $i=6,35$ )

Tyres: 445/75 R22,5  
 Suspension: hydro-pneumatic on all axles; stroke cyl: 247 mm  
 Max. speed carrier (engine at 1000 rpm): 85 km/uur  
 Overall weight: 1,6 km/uur  
 60.000 kg.

# SPIERINGS SK1265 AT6



DM Cranes Ltd

MOBILE TOWER CRANES

www.dmcranes.co.uk

## SPIERINGS HYDRAULIC FOLDING CRANE



	<b>Make: SPIERINGS</b>		<b>Type: SK1265-AT6</b>																																																																																																																																																					
	<b>Crane specification (Jib length 60 m)</b>																																																																																																																																																							
Serial number <input type="text"/>  Year of construction <input type="text"/>	Crane group : A3 as per FEM 1.001 Loadspectrum : Q1 as per FEM 1.001 Classification : U4 as per FEM 1.001 Stability : as per FEM 1.001		Max. load  <b>10,0 tonne</b>	Max.radius with max. load  <b>13,2 m</b>	Max. capacity  <b>132 tm</b>	Max. jib length  <b>60 m</b>																																																																																																																																																		
<b>Speeds</b> Jib horizontal / jib 30° luffed <table border="1"> <tr> <td>m/min</td> <td>kg</td> <td></td> </tr> <tr> <td>15</td> <td>10000</td> <td>0 - 70 m/min</td> </tr> <tr> <td>30</td> <td>5000</td> <td></td> </tr> <tr> <td>45</td> <td>2500</td> <td>0-0,7 r/min</td> </tr> <tr> <td>75</td> <td>0</td> <td></td> </tr> </table>	m/min	kg		15	10000	0 - 70 m/min	30	5000		45	2500	0-0,7 r/min	75	0		All motions with hydraulic proportional controls Luffing the jib 30° can be controlled from crane cab or via remote control The crane should be folded in at a wind force > 8 on the Beaufort scale (wind speed 20 m/min)		Crane equipped with full counterweight: 14300 kg 360° continuous slewing : with outriggers out and down Operating temperature : range from -15° to 40° C.		Rated lifting capacity is not capacity Max. line pull force : 2500 kg 2 parts of line : 6000 kg - 1700 kg 4 parts of line : 10000 kg - 5000 kg Sail area of the load : max. 1,0 m <sup>2</sup> / tonne Max. outrigger loading: 520 kN																																																																																																																																				
m/min	kg																																																																																																																																																							
15	10000	0 - 70 m/min																																																																																																																																																						
30	5000																																																																																																																																																							
45	2500	0-0,7 r/min																																																																																																																																																						
75	0																																																																																																																																																							
<b>Lifting chart</b>						<b>Outrigger spread : 7,95 m x 7,66 m (up to wind force 6 on the beaufort scale)</b>																																																																																																																																																		
<table border="1"> <tr> <td colspan="6"> <b>Jib horizontal</b> </td> <td colspan="6"> <b>hook height 25,2 / 35 m (height under the jib 27,4 / 37,2 m)</b> </td> </tr> <tr> <td>3,5</td><td>13,2</td><td>15</td><td>20</td><td>25</td><td>30</td><td>35</td><td>40</td><td>45</td><td>50</td><td>55</td><td>60</td> <td>radius (m)</td> </tr> <tr> <td>10000</td><td>8335</td><td>7985</td><td>6965</td><td>6170</td><td>5530</td><td>5000</td><td>4560</td><td>4190</td><td>3870</td><td>3590</td><td>3350</td><td>3130</td><td>2940</td><td>2770</td><td>2615</td><td>2475</td><td>2345</td><td>2230</td><td>2125</td><td>2025</td><td>1935</td><td>1850</td><td>1775</td><td>1700</td> <td>load (kg)</td> </tr> <tr> <td>36</td><td colspan="10"></td><td>46,2</td><td>48,5</td><td>51,35</td><td>54,25</td><td>57,15</td><td>60</td><td>62,9</td><td>64,2</td><td colspan="5">hook height (m)</td> </tr> <tr> <td>3,5</td><td colspan="10"></td><td>21</td><td>25</td><td>30</td><td>35</td><td>40</td><td>45</td><td>50</td><td>52,2</td><td colspan="5">radius (m)</td> </tr> <tr> <td>5000</td><td colspan="10"></td><td>4740</td><td>4285</td><td>3905</td><td>3580</td><td>3305</td><td>3065</td><td>2855</td><td>2665</td><td>2500</td><td>2350</td><td>2220</td><td>2095</td><td>1985</td><td>1885</td><td>1795</td><td>1700</td> <td>load (m)</td> </tr> </table>												<b>Jib horizontal</b>						<b>hook height 25,2 / 35 m (height under the jib 27,4 / 37,2 m)</b>						3,5	13,2	15	20	25	30	35	40	45	50	55	60	radius (m)	10000	8335	7985	6965	6170	5530	5000	4560	4190	3870	3590	3350	3130	2940	2770	2615	2475	2345	2230	2125	2025	1935	1850	1775	1700	load (kg)	36											46,2	48,5	51,35	54,25	57,15	60	62,9	64,2	hook height (m)					3,5											21	25	30	35	40	45	50	52,2	radius (m)					5000											4740	4285	3905	3580	3305	3065	2855	2665	2500	2350	2220	2095	1985	1885	1795	1700	load (m)														
<b>Jib horizontal</b>						<b>hook height 25,2 / 35 m (height under the jib 27,4 / 37,2 m)</b>																																																																																																																																																		
3,5	13,2	15	20	25	30	35	40	45	50	55	60	radius (m)																																																																																																																																												
10000	8335	7985	6965	6170	5530	5000	4560	4190	3870	3590	3350	3130	2940	2770	2615	2475	2345	2230	2125	2025	1935	1850	1775	1700	load (kg)																																																																																																																															
36											46,2	48,5	51,35	54,25	57,15	60	62,9	64,2	hook height (m)																																																																																																																																					
3,5											21	25	30	35	40	45	50	52,2	radius (m)																																																																																																																																					
5000											4740	4285	3905	3580	3305	3065	2855	2665	2500	2350	2220	2095	1985	1885	1795	1700	load (m)																																																																																																																													
<b>Lifting chart</b>						<b>Outrigger spread : 7,95 m x 5,72 m (up to wind force 6 on the beaufort scale)</b>																																																																																																																																																		
<table border="1"> <tr> <td colspan="6"> <b>Jib horizontal</b> </td> <td colspan="6"> <b>hook height 25,2 / 35 m (height under the jib 27,4 / 37,2 m)</b> </td> </tr> <tr> <td>3,5</td><td>8,1</td><td>10</td><td>15</td><td>20</td><td>25</td><td>30</td><td>35</td><td>40</td><td>45</td><td>50</td><td>55</td><td>60</td> <td>radius (m)</td> </tr> <tr> <td>10000</td><td>10000</td><td>7685</td><td>6695</td><td>5885</td><td>5085</td><td>4325</td><td>3755</td><td>3305</td><td>2945</td><td>2650</td><td>2405</td><td>2195</td><td>2015</td><td>1860</td><td>1725</td><td>1605</td><td>1495</td><td>1400</td><td>1315</td><td>1235</td><td>1165</td><td>1100</td><td>1040</td><td>985</td><td>930</td><td>885</td><td>840</td><td>800</td> <td>load (kg)</td> </tr> <tr> <td>36</td><td colspan="10"></td><td>41,3</td><td>42,7</td><td>45,5</td><td>48,5</td><td>51,35</td><td>54,25</td><td>57,15</td><td>60</td><td>62,9</td><td>64,2</td><td colspan="5">hook height (m)</td> </tr> <tr> <td>3,5</td><td colspan="10"></td><td>12,5</td><td>15</td><td>20</td><td>25</td><td>30</td><td>35</td><td>40</td><td>45</td><td>50</td><td>52,2</td><td colspan="5">radius (m)</td> </tr> <tr> <td>5000</td><td colspan="10"></td><td>5000</td><td>4325</td><td>3700</td><td>3205</td><td>2815</td><td>2505</td><td>2250</td><td>2035</td><td>1855</td><td>1700</td><td>1565</td><td>1445</td><td>1340</td><td>1250</td><td>1165</td><td>1090</td><td>1025</td><td>960</td><td>905</td><td>850</td><td>800</td> <td>load (m)</td> </tr> </table>												<b>Jib horizontal</b>						<b>hook height 25,2 / 35 m (height under the jib 27,4 / 37,2 m)</b>						3,5	8,1	10	15	20	25	30	35	40	45	50	55	60	radius (m)	10000	10000	7685	6695	5885	5085	4325	3755	3305	2945	2650	2405	2195	2015	1860	1725	1605	1495	1400	1315	1235	1165	1100	1040	985	930	885	840	800	load (kg)	36											41,3	42,7	45,5	48,5	51,35	54,25	57,15	60	62,9	64,2	hook height (m)					3,5											12,5	15	20	25	30	35	40	45	50	52,2	radius (m)					5000											5000	4325	3700	3205	2815	2505	2250	2035	1855	1700	1565	1445	1340	1250	1165	1090	1025	960	905	850	800	load (m)
<b>Jib horizontal</b>						<b>hook height 25,2 / 35 m (height under the jib 27,4 / 37,2 m)</b>																																																																																																																																																		
3,5	8,1	10	15	20	25	30	35	40	45	50	55	60	radius (m)																																																																																																																																											
10000	10000	7685	6695	5885	5085	4325	3755	3305	2945	2650	2405	2195	2015	1860	1725	1605	1495	1400	1315	1235	1165	1100	1040	985	930	885	840	800	load (kg)																																																																																																																											
36											41,3	42,7	45,5	48,5	51,35	54,25	57,15	60	62,9	64,2	hook height (m)																																																																																																																																			
3,5											12,5	15	20	25	30	35	40	45	50	52,2	radius (m)																																																																																																																																			
5000											5000	4325	3700	3205	2815	2505	2250	2035	1855	1700	1565	1445	1340	1250	1165	1090	1025	960	905	850	800	load (m)																																																																																																																								
changes subject to modifications																																																																																																																																																								