

Crane specification (Jib length 52 m)

Serial number

Year of construction

| | | | | |
|--------------------------------------|-------------------|---------------------------|---------------|-----------------|
| Crane group : A3 as per FEM 1.001 | Max. load | Max.radius with max. load | Max. capacity | Max. jib length |
| Loadspectrum : Q1 as per FEM 1.001 | 10,0 tonne | 13,57 m | 135 tm | 52 m |
| Classification : U4 as per FEM 1.001 | | | | |
| Stability : as per FEM 1.001 | | | | |

Speeds Jib horizontal / jib 30° luffed

| | | | | |
|----|-------|-------|--|--------------|
| | m/min | kg | | 0 - 70 m/min |
| | 15 | 10000 | | |
| | 30 | 5000 | | 0-0,7 r/min |
| | 45 | 2500 | | |
| 75 | 0 | | | |

All motions with hydraulic proportional controls.

Continuous slewing of the crane (360°) with the outriggers out and support pads down.

Rated lifting capacity is net capacity.

Counterweight Crane : 12600 kg.

Outriggers positioned according to lifting chart

Luffing the jib 30° can be controlled from crane cab or by remote control.

The crane should be folded in at wind force 9 (Bf) (21 m/sec) or when not in use for a longer period.

Max. line pull force : 2500 kg.

Outrigger support base : 7,95 x 7,66 m.

Crane can be driven in its erected position under special conditions (refer user guide).

Operating temperature range from -15°C till +40°C

2 parts of line : 5000 kg - 1700 kg

Operation allowed up to wind force 7 (14 m/s).

4 parts of line : 10000 kg - 5000 kg

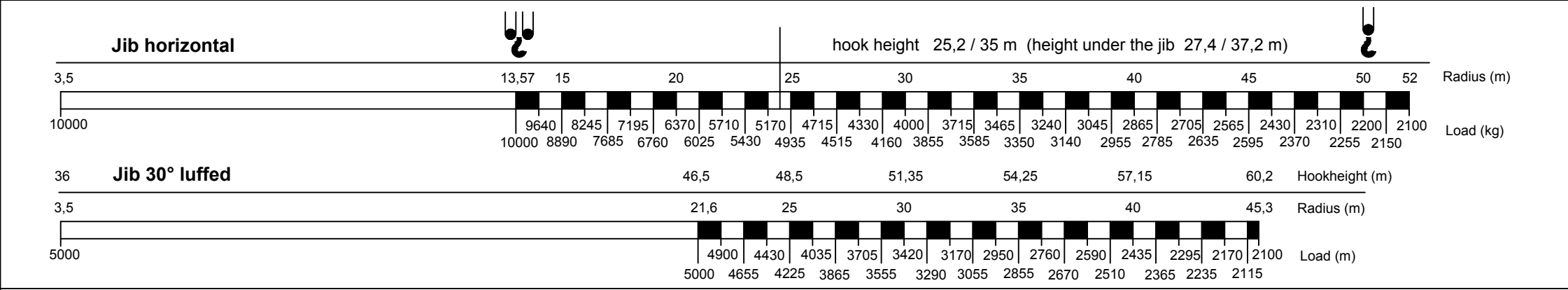
Outrigger support base : 7,95 x 5,72 m.

Operation allowed up to wind force 7 (14 m/s).

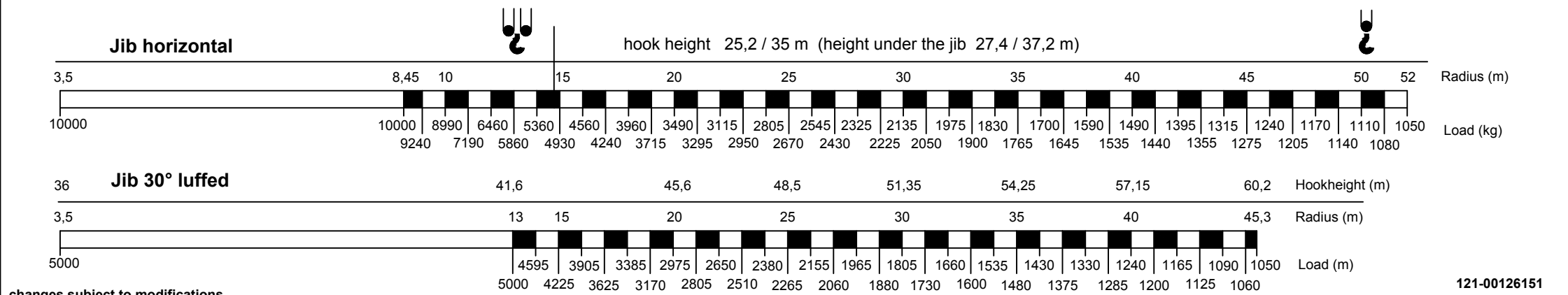
Sail area of the load max.: 1,0 m²/ ton.

Max. outrigger force: 520 kN.

Lifting chart Outrigger support base : 7,95 m x 7,66 m



Lifting chart Outrigger support base : 7,95 m x 5,72 m



changes subject to modifications

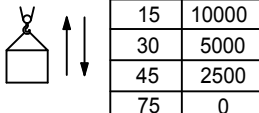
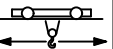

Crane specification (Jib length 60 m)

Serial number

Year of construction

| | | | | |
|--------------------------------------|-------------------|---------------------------|---------------|-----------------|
| Crane group : A3 as per FEM 1.001 | Max. load | Max.radius with max. load | Max. capacity | Max. jib length |
| Loadspectrum : Q1 as per FEM 1.001 | 10,0 tonne | 13,2 m | 132 tm | 60 m |
| Classification : U4 as per FEM 1.001 | | | | |
| Stability : as per FEM 1.001 | | | | |

Speeds Jib horizontal / jib 30° luffed

| | | | | |
|--|-------|-------|---|--------------|
|  | m/min | kg |  | 0 - 70 m/min |
| | 15 | 10000 | | |
| | 30 | 5000 |  | 0-0,7 r/min |
| | 45 | 2500 | | |
| 75 | 0 | | | |

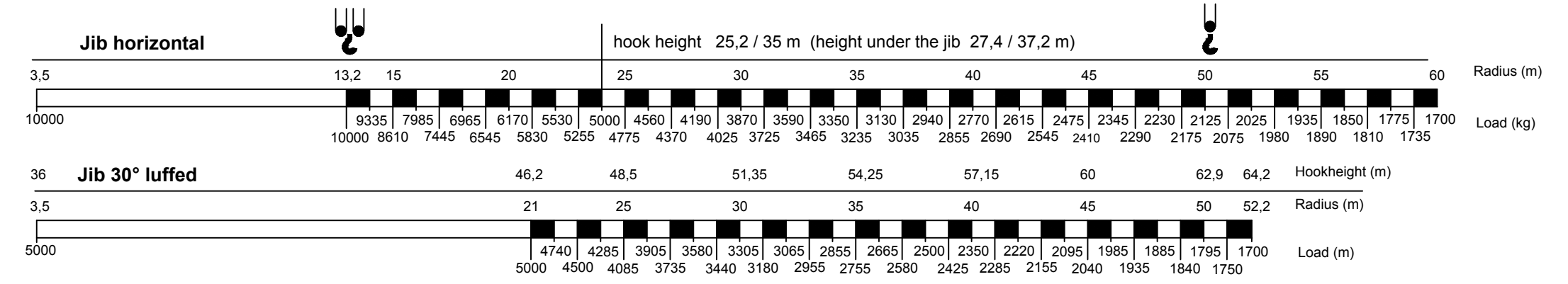
All motions with hydraulic proportional controls.
Luffing the jib 30° can be controlled from crane cab or by remote control.
Crane can be driven in its erected position under special conditions (refer user guide).

Continuous slewing of the crane (360°) with the outriggers out and support pads down.
The crane should be folded in at wind force 9 (Bf) (21 m/sec) or when not in use for a longer period.
Operating temperature range from -15°C till +40°C

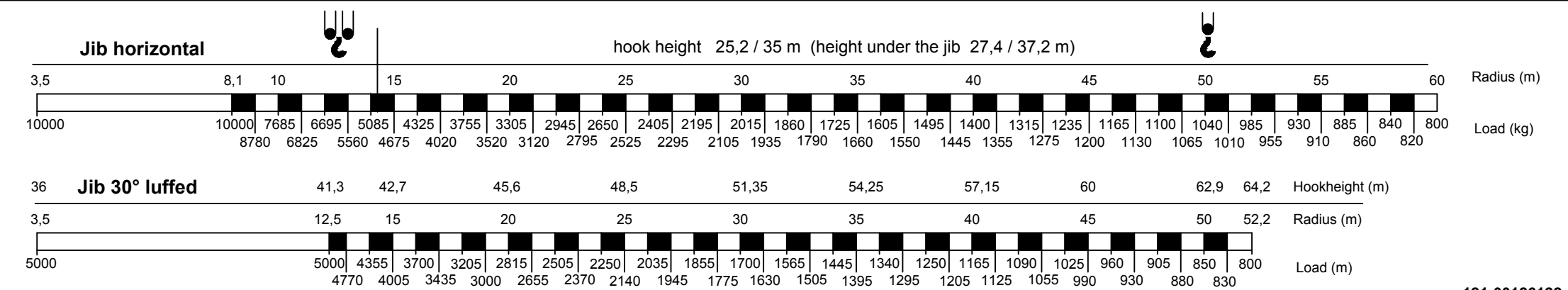
Counterweight Crane : 12600 kg.
Rated lifting capacity is net capacity.
Max. line pull force : 2500 kg.
2 parts of line : 5000 kg - 1700 kg
4 parts of line : 10000 kg - 5000 kg
Sail area of the load max.: 1,0 m²/ ton.

Outriggers positioned according to lifting chart
Outrigger support base : 7,95 x 7,66 m.
Operation allowed up to wind force 7 (14 m/s).
Outrigger support base : 7,95 x 5,72 m.
Operation allowed up to wind force 7 (14 m/s).
Max. outrigger force: 520 kN.

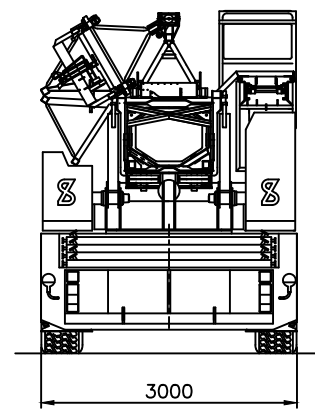
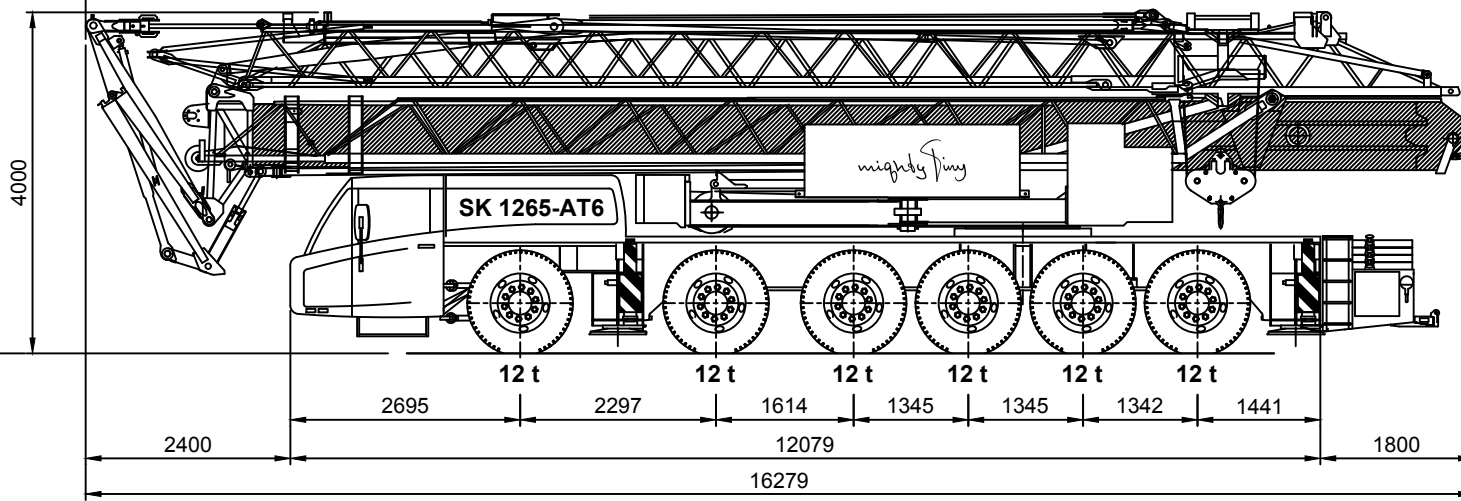
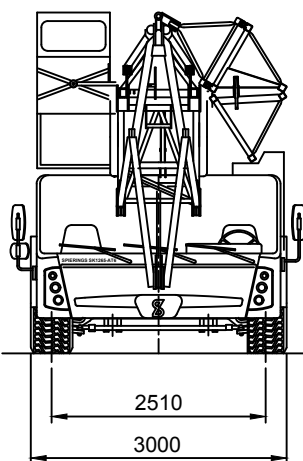
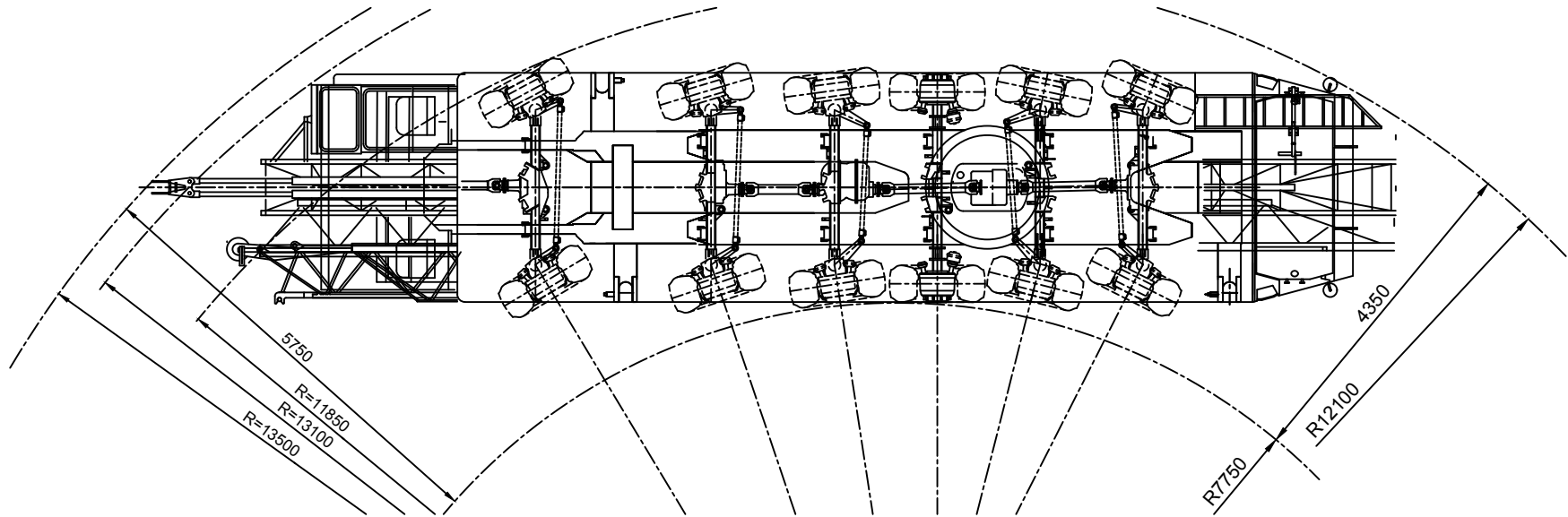
Lifting chart Outrigger support base : 7,95 m x 7,66 m



Lifting chart Outrigger support base : 7,95 m x 5,72 m



changes subject to modifications



SPIERINGS HYDRAULIC FOLDING CRANE SK 1265 - AT6

SPIERINGS
MOBILE CRANES
Merwedestraat 15
5347 KZ Oss NL
Tel. +31 (0)412-626964
www.spieringscranes.com

121-00126102A

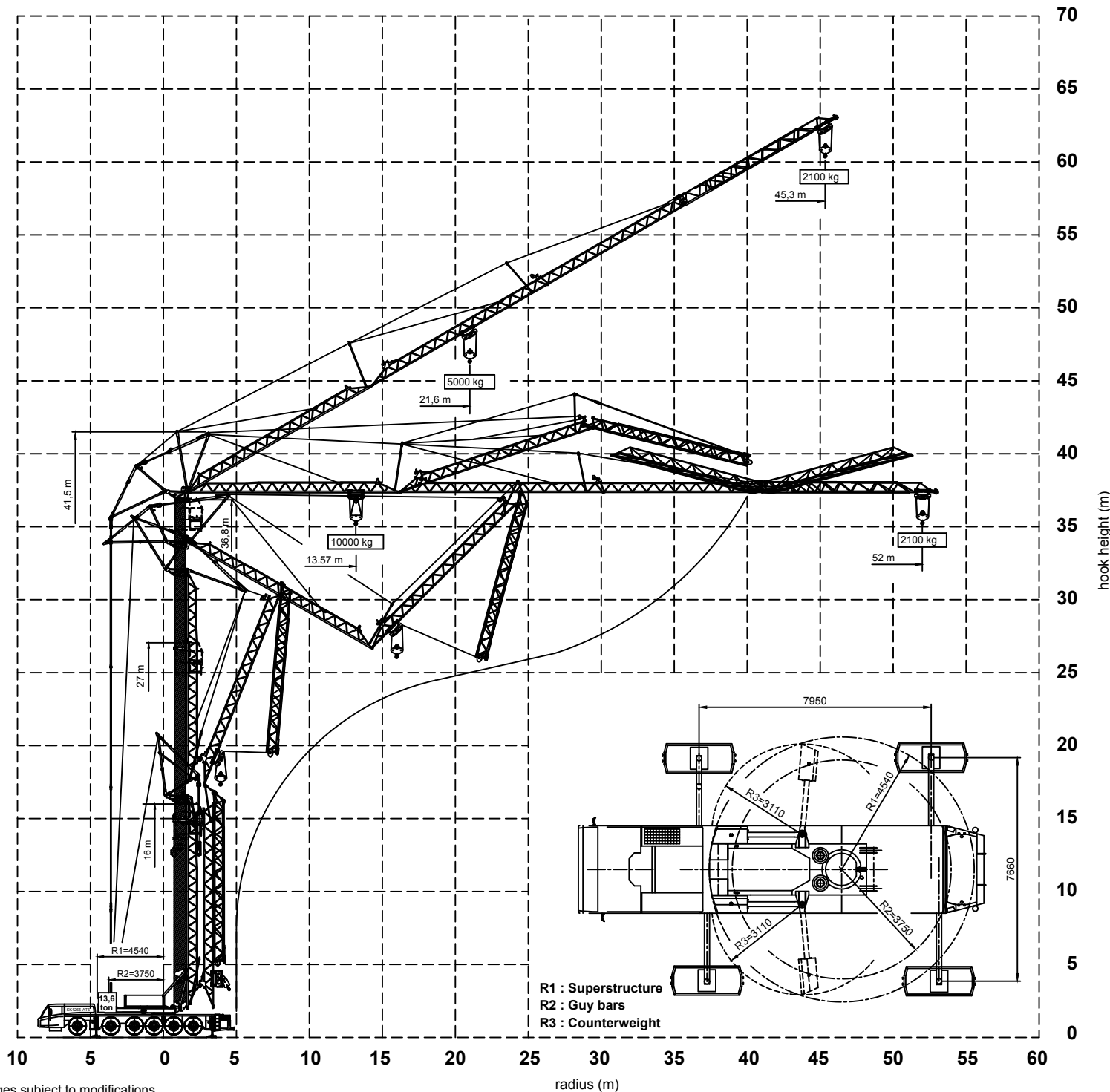
Total weight: 72000 kg
Changes subject to modifications

SPIERINGS HYDRAULIC FOLDING CRANE SK1265-AT6

Erection procedure of the crane Jib radius 52 m

Max. outrigger force : 520 kN
 Outrigger support pads : 750x600 mm
 Ground pressure : 1,15N/mm²
 Jib can be unfolded through 360°
 Luffing the jib 30° can be controlled from
 the crane cab or remote control

Outrigger support plates : 2500x1000 mm
 surface : 2,35 m²
 Ground pressure : 0,22 N/mm²



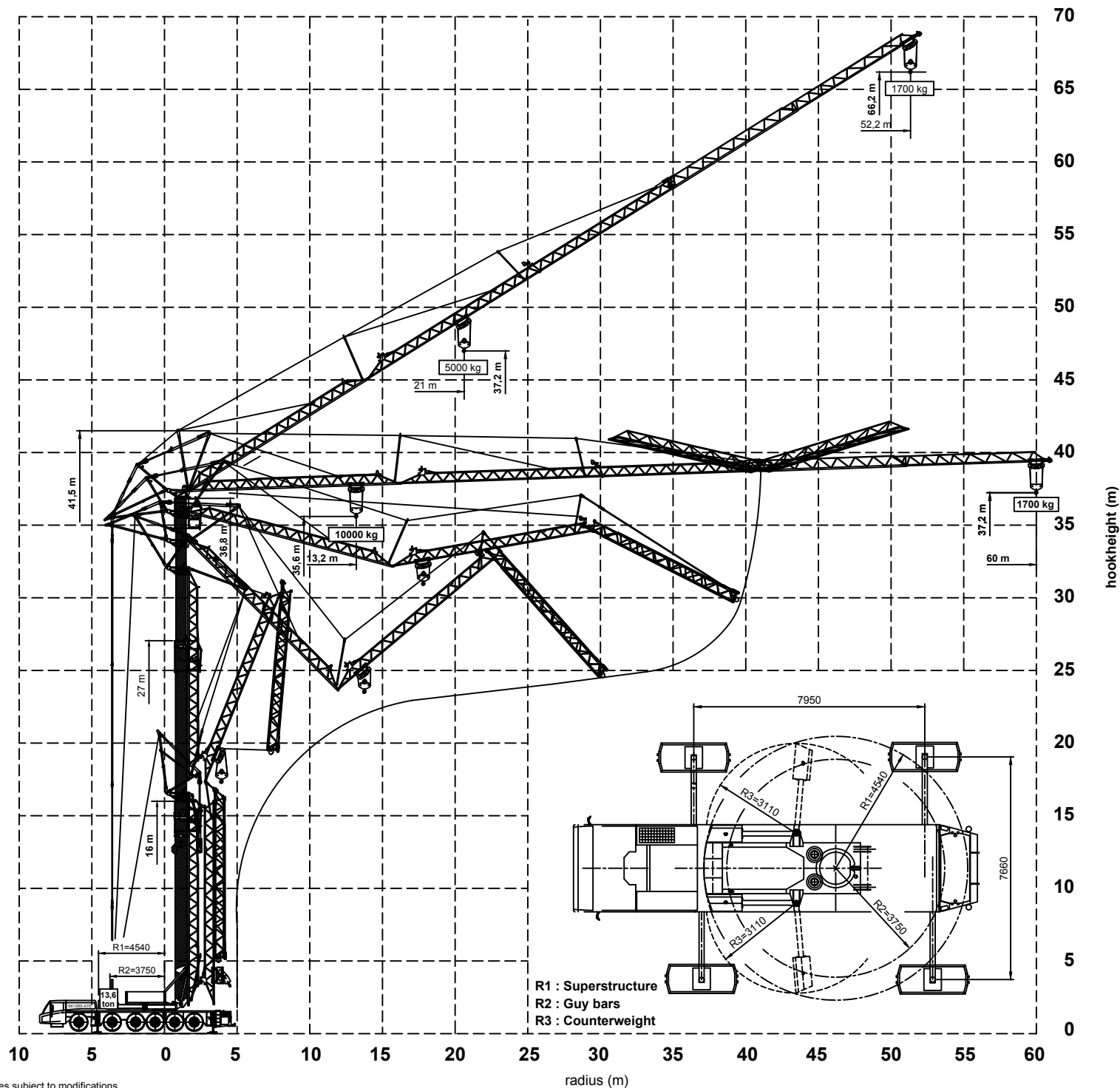
SPIERINGS
MOBILE CRANES
 Merwedestraat 15
 5347 KZ Oss NL
 Tel. +31 (0)412-626964
www.spieringcranes.com

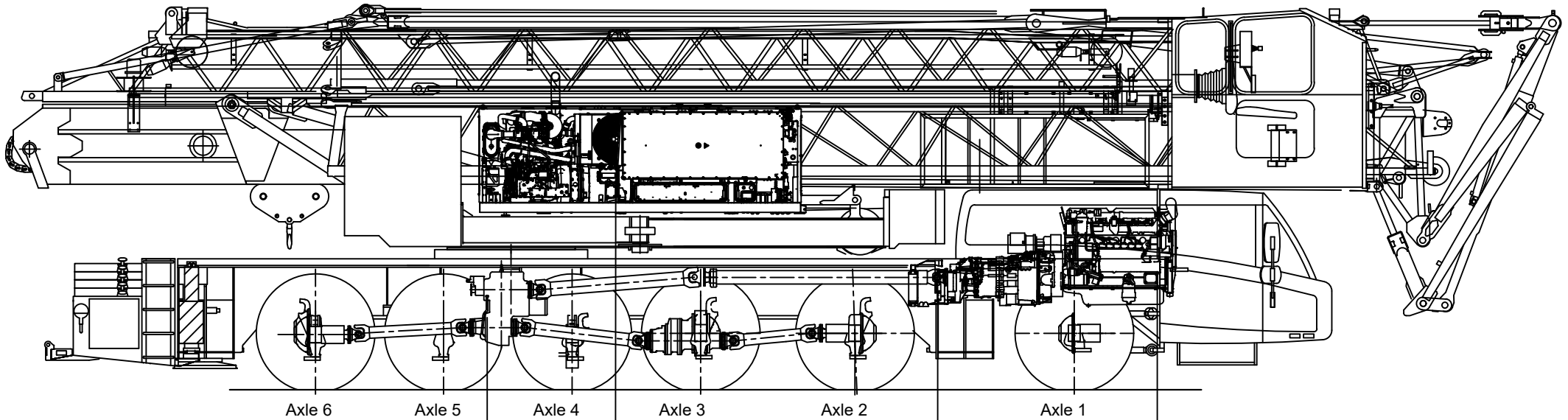
SPIERINGS HYDRAULIC FOLDING CRANE SK1265-AT6

Erection procedure of the crane Jib radius 60 m

Max. outrigger force : 520 kN
 Outrigger support pads : 750x600 mm
 Ground pressure : 1,15N/mm²
 Jib can be unfolded through 360°
 Luffing the jib 30° can be controlled from
 the crane cab or remote control

Outrigger support plates : 2500x1000 mm
 surface : 2,35 m²
 Ground pressure : 0,22 N/mm²





Transfer box:
ZF VG2001/396
Road gear $i=0,89$
Off-road gear $i=1,54$

Hybrid Powerpack:
Diesel engine: John Deere 3029HI530 Motor/generator: Danfoss EM-PMI375-T500
Power: 55 kW (2400 rpm) Power: 130 kW (2300 rpm)
Torque: 292 Nm (1600 rpm) Torque: 538 Nm (2300 rpm)

Battery:
Nom. voltage: 661 V DC
Capacity: 37 Ah
Energy: 24,5 kWh

Gearbox:
ZF Traxon 16TX-3441 SO
Automatic + interarder
dry plate clutch

Carrier diesel engine:
DAF: MX13-390 H3 Euro VI (12,9 ltr)
Power: 390 kW (1675 rpm)
Torque: 2600 Nm (1000-1400 rpm)

Axle 1 : Steer axle
Axle 2 : Steer drive axle (end reduction $i=6,35$)
Axle 3 : Steer drive axle (end reduction $i=6,35$)
Axle 4 : Axle , non steered and non powered
Axle 5 : Steer axle
Axle 6 : Steer drive axle (end reduction $i=6,35$)
Kessler-axes with disc brakes

Tyres : 445/65 R22,5 or 445/75 R22,5
Suspension : Hydro-pneumatic on all axles
Stroke suspension cylinder : 247 mm
Max. speed carrier : 80 or 83 km/h
Min. speed carrier (engine at 1000 rpm) : 1,4 km/h
Overall weight : 72.000 kg

Drive train Spierings Folding Crane SK 1265-AT6 eLift

SPIERINGS
MOBILE CRANES

Merwedestraat 15
5347 KZ Oss NL
Tel. +31 (0)412-626964
www.spieringscranes.com

121-00126116